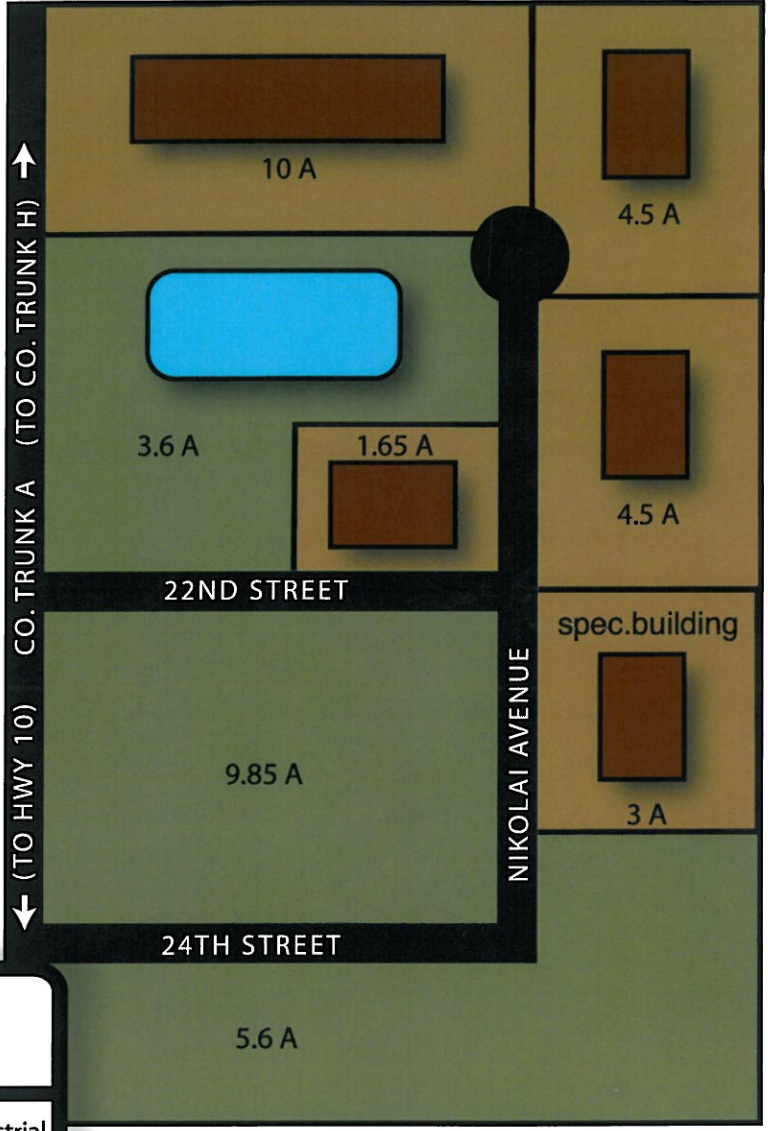


This 60-acre, privately-owned Industrial Park is located on Marshfield's Eastside, 1 block North of the new Hwy. 10/13 by-pass. Streets are set up with mountable curb and gutter and are asphalt paved. All city utilities are available. Convenient horseshoe layout for easy access by semi truck traffic.

24,500 S.F. Metal spec. building available for sale or lease. Office, docks, 22' eave height, 3-phase power, 2-16' x 14' overhead doors with drive through bay, and 3 dock doors.



- M-3 Heavy Industrial Lots Available
- Existing Building
- Existing Roadway
- Pond

CONTACTS

Marshfield Area Chamber of Commerce & Industry Economic Corp. For the Greater Marshfield Area
 715.384.3454 fax: 715.387.8925
 info@marshfieldchamber.com
 www.marshfieldchamber.com
 Don Nikolai Construction, Inc.
 715.384.8275; Fax: 715.384.9332

GENERAL INFORMATION

- 60 acres, privately owned
- Bordered by County Hwy. A
- Easy access to US Hwy. 10
- Over 30 acres available
- 24,500 sq. ft. spec building for sale or lease